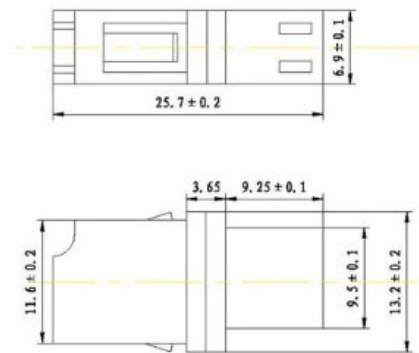
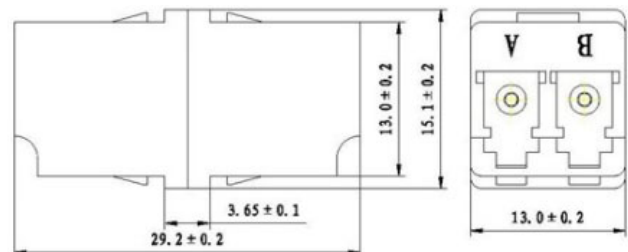
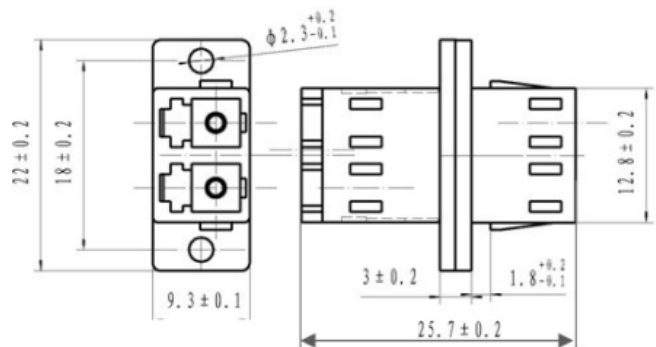
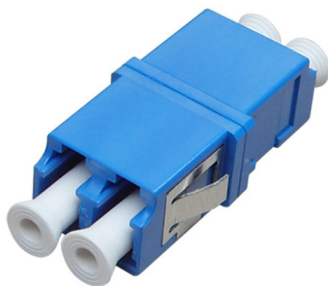
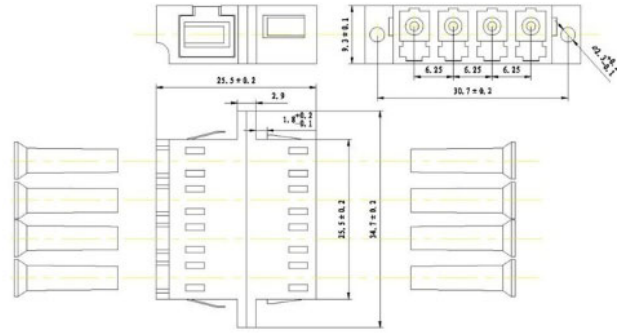
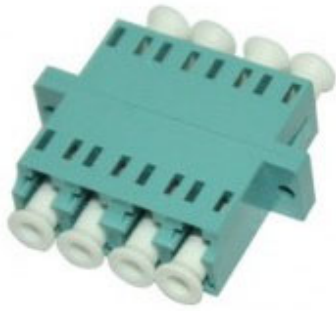


LC ADAPTER FAMILY V1.0
Feature:

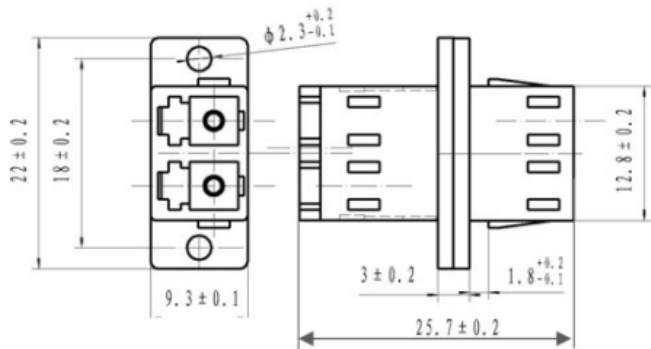
- Low insertion loss and back reflection loss.
- High Precision of Mechanical Dimensions.
- Compliant with Telcordia GR-326-Core, IEC, TIA.
- RoHS compliant.
- 100% Optic test.
- Max. IL ≤ 0.2db.

Dimension:
LSL-LC Simplex Low Profile Adapter

LDL-LC Duplex Low Profile Adapter

LDS-LC Duplex SC Foot Print Adapter


LQ-LC Quad Adapter



LIS-LC Duplex Inner Shutter Adapter



ADAPTER