

IDP48-1A 48 ports fiber splice box

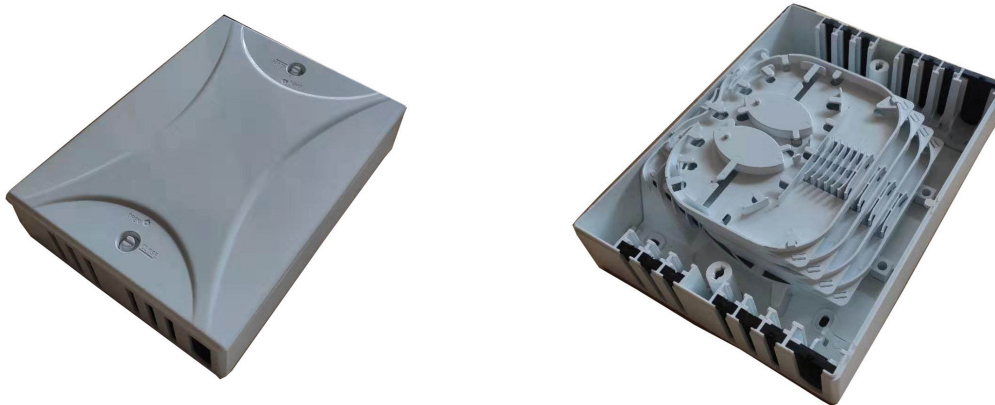
INTRODUCTION

IDP48-1A fiber splice box is for FTTH application, to finish the cable termination and the distribution of the drop cable. It can be wall or pole mounted on the outside environment.

Features

- User familiar industry interface, using impact plastic.
- 4x12 splice per tray.
- Fire resistant, complied to UL94-V0.
- Up to 48 FTTH drops.
- Wall and Pole Mountable
- IK10

Photos



Dimension

